



E SERIES

3.5-inch super large screen,
extra long battery life for
peace of mind

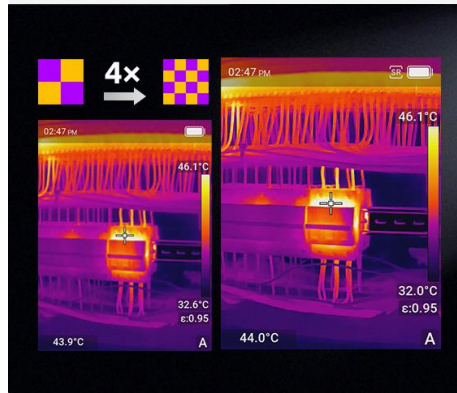
3.5-inch large screen

The 3.5-inch screen not only provides a broader field of view and clearer detail presentation, but also offers a more comfortable visual experience and a more intuitive operation feel.



SuperIR

Based on advanced deep learning technology, low-resolution images are achieved a 4X enhancement in image quality through various optimizations including defogging, sharpening, contrast enhancement, and lossless enlargemen.



12 hour battery life

With 12-hour battery life, our thermal imager meets long-duration needs and highlights our advanced battery and low-power design.



Fast charging
Charges to 90% in 1 Hour

OTA

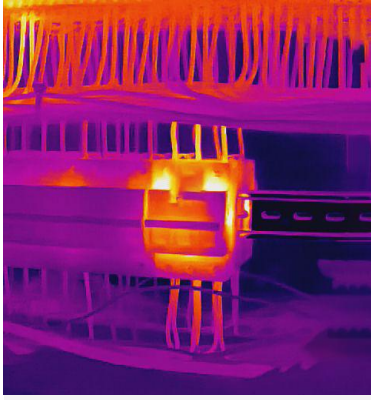
Macro

Measuring range
-20~650°C

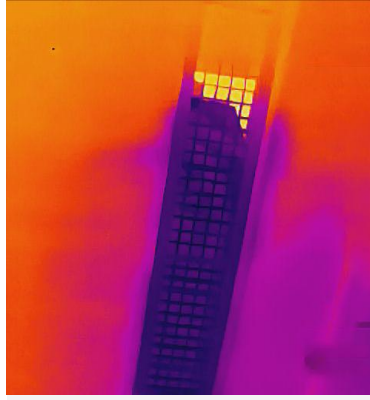
30Hz

35mK

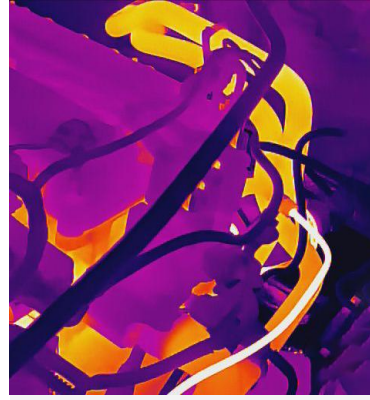
Applications



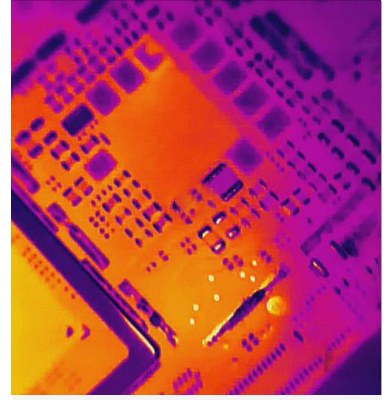
Electrical



Air-conditioning



Auto Repair



PCB

Standard Package



- Quick Start Guide
- Inspection Report
- Calibration Certificate

Specifications

Model		E3	E4
Imaging and Optics	IR Resolution	256*192	384*288
	SuperIR	Yes, on captured images and live view	
	NETD	<30mK	<25mK
	Image Frequency	30Hz/9Hz	
	Field of View (FOV)	56°*42°	37°*28°
	Focus Mode	Focus Free	
Image Display	Visual Camera	1600 × 1200 (2 MP)	
	Image Modes	Thermal/Visual/MIF/PIP	
	Display	640*480 Resolution, 3.5"LCD Screen	
Measurement and Analysis	Object Temperature Range	-20°C to 150°C, 0°C to 550°C,Support auto-switching	-20°C to 150°C, 0°C to 650°C,Support auto-switching
	Accuracy	±2°C or 2%, whichever is greater (23°C ± 5°C ambient)	
Data Storage and Communication	Storage Media	Built-in 32GB flash memory	
	File Format	Radiometric JPEG	
General	Durability	2m (6.56 ft) drop test, IP54	
	Wi-Fi	802.11 b/g/n (2.4GHz)	
	System upgrade	OTA	
	USB-Type C	Charging and transmission	
	Led Flashlight	Yes	
	Laser Pointer	Yes	
	Battery Operating Time	≥12 hours	≥10 hours
	Battery Type& Charging Time	Fast-charging, Lithium-ion battery, Charges to 90% in 1 hour	

Software



PC Software – ThermoTools
(Windows)



Mobile App –FocusIR
(Android/iOS)

* Product performance is based on testing in a controlled laboratory environment. Your test results may vary due to several external and environmental factors. All specifications are subject to the actual product. The manufacturer reserves the right to modify technical specifications without notice or liability to you.